

PART OF S.E. 1/4 OF SEC. 20, T.7N., R.1W., S.1.B. & M.

59

W. S. BUTLER SUBDIVISION

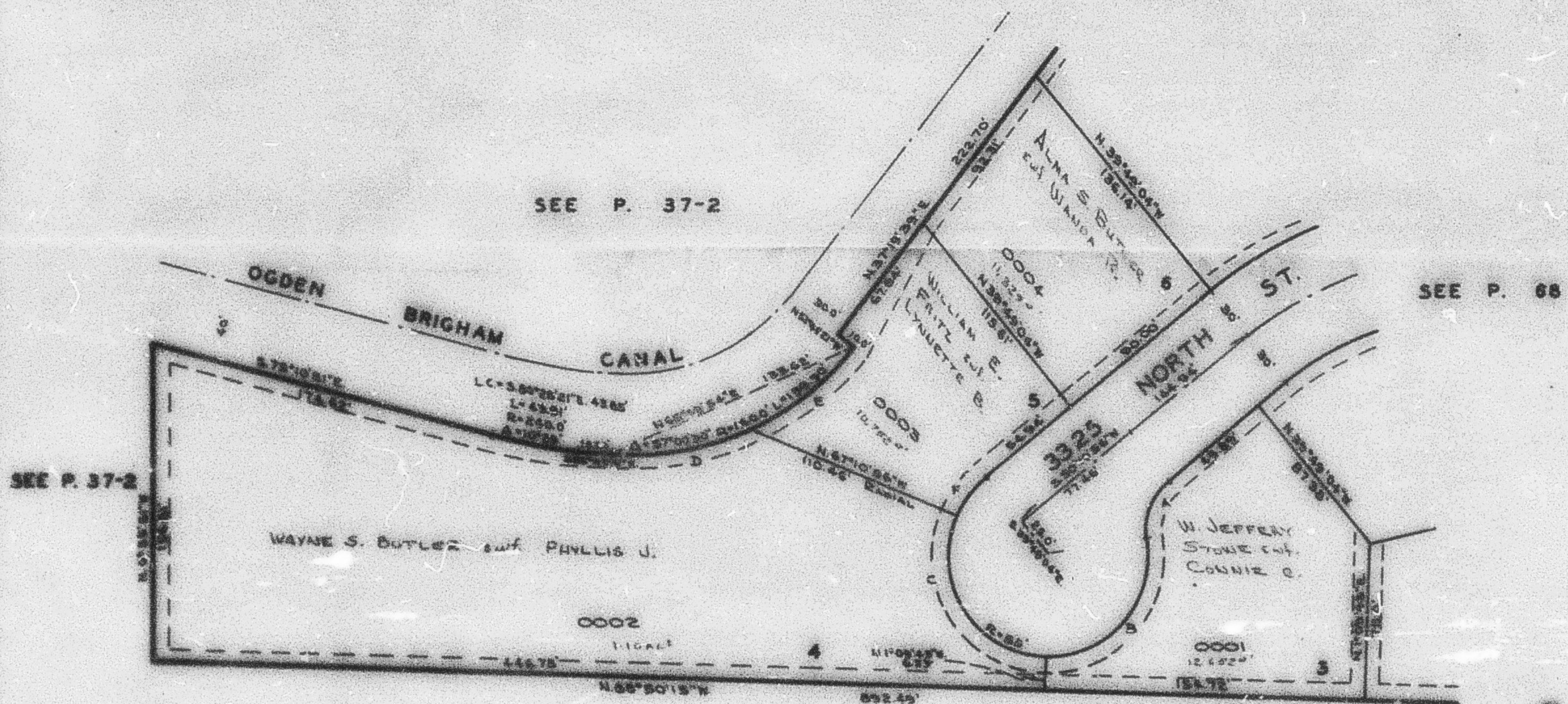
LOTS 3 TO 6

IN NORTH OGDEN CITY

TAXING UNIT: 10

SCALE 1" = 50'

PREFIX: 15-059



SEE P. 37-2

SEE P. 68

SEE P. 37-2

SEE BOOK 17, P. 43

CURVE DATA

A	B	C	D	E	F
Δ = 27°4'03"	108°29'53"	111°28'14"	29°19'20"	27°43'46"	27°21'52"
R = 85.0'	55.0'	55.0'	140.00'	140.00'	55.0'
L = 34.25'	102.50'	107.16'	71.55'	67.75'	25.27'
LC = 32.54'	55.23'	91.0'	70.77'	67.09'	25.02'

NOTE: 'T' UTILITY & DRAINAGE EASEMENTS EACH SIDE OF PROPERTY LINE AS INDICATED BY DASHED LINES. SEE ORIGINAL PLAT IN BOOK 16 P. 76